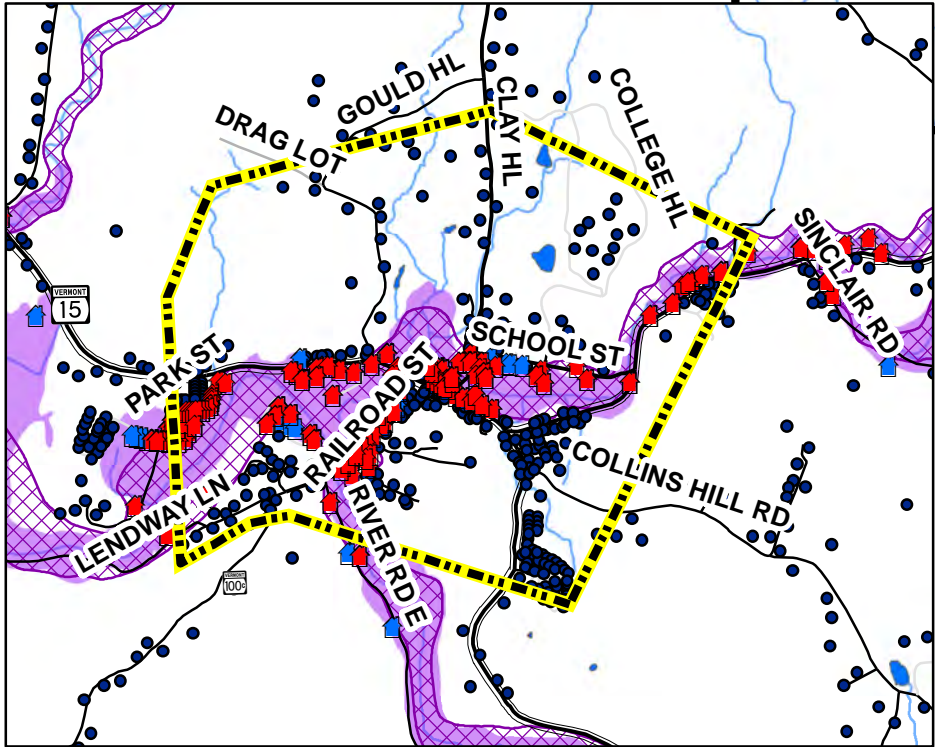
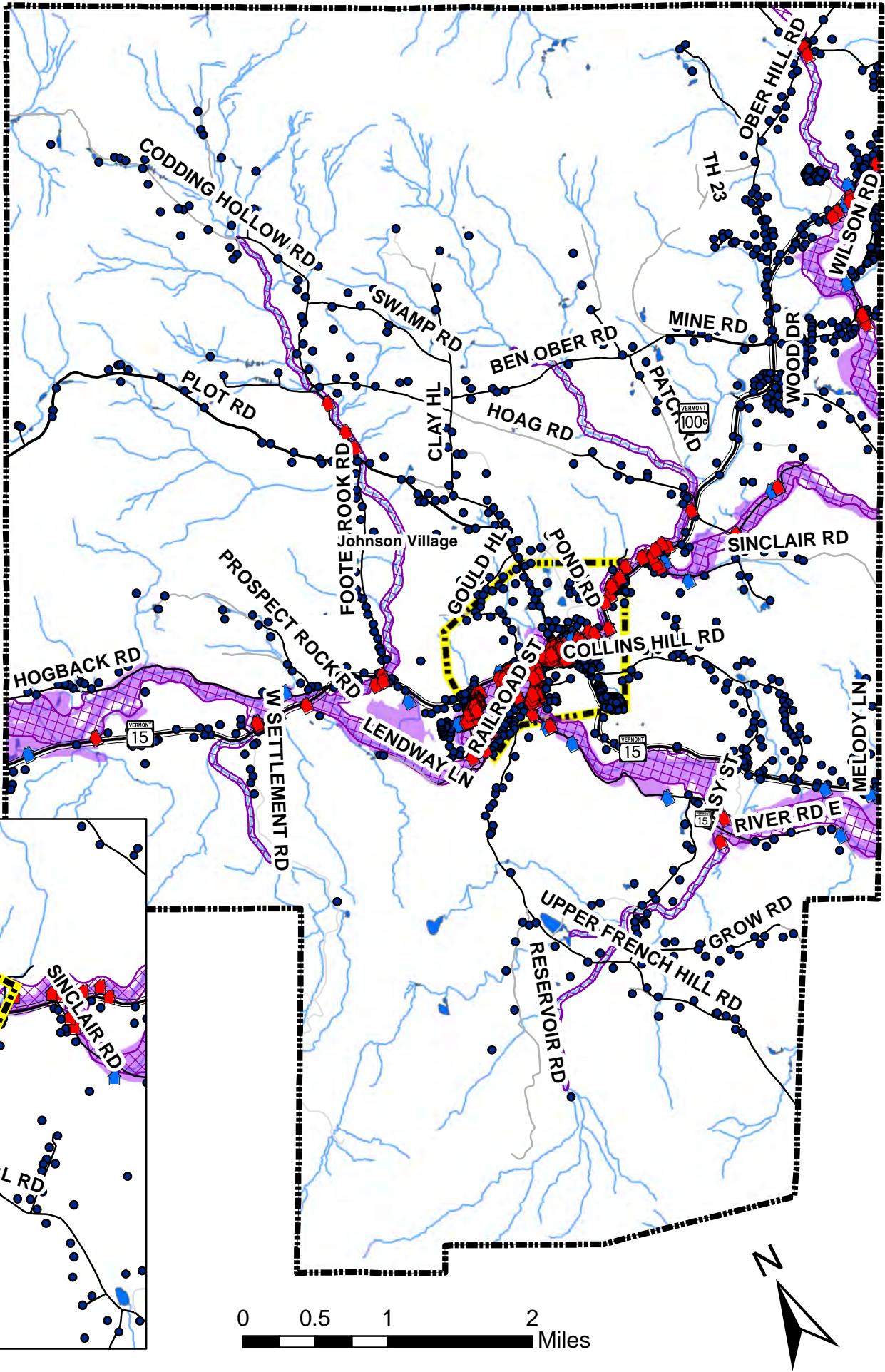


Johnson Town and Village Structures Vulnerable to Flooding

Category	Count of Structures in River Corridor or SFHA	% of All Structures
Commercial	27	36%
Cultural	2	40%
Educational	6	24%
Governmental	6	60%
Industrial	2	20%
Medical	0	0%
Racrecational	2	3%
Single Family Dwelling	125	12%
Multi-Family Dwelling	16	27%
Total	186	14%



Johnson Village



- Structure in River Corridor
- Structure in Special Flood Hazard Area
- Structure Outside of SFHA and River Corridor
- State Highway
- Class 2 Road
- Class 3 Road
- Class 4 Road
- Private Road
- River Corridor
- 100 Year Flood Plain
- Lake
- Stream
- Town Boundary
- Village Boundary

DATA SOURCES:
POLITICAL BOUNDARIES: 1:24000 USGS Quadrangles, VCGI, 1991.
STRUCTURES: E911 ESITE data, 2014.
SURFACE WATER: On-screen digitized from 1:5000 digital orthophotos using USGS 7 1/2' quadrangles and 1:20000 color infrared aerial photography as additional source material, VCGI for VHD-USGS, 2001.

