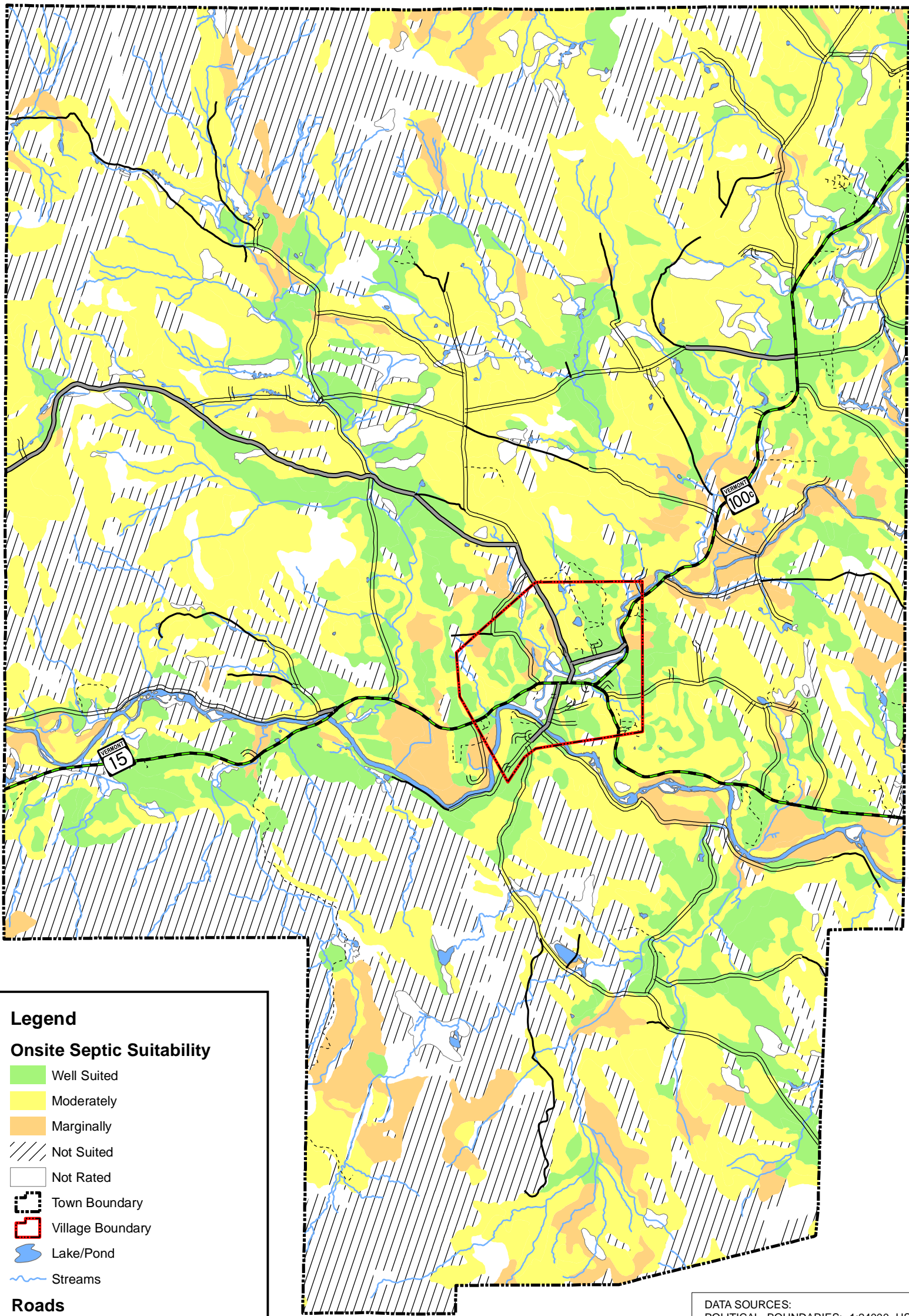


Johnson, Vermont
Town Plan
Onsite Septic Suitability Map



Legend

Onsite Septic Suitability

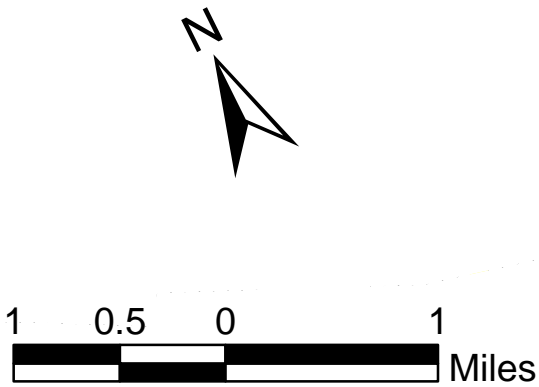
- Well Suited
- Moderately
- Marginally
- Not Suited
- Not Rated

Roads

- State Highway
- State Forest Highway
- Class 2 Town Highway
- Class 3 Town Highway
- Class 4 Town Highway
- Public Road, Undetermined Class
- Unknown / Private Road
- Trail

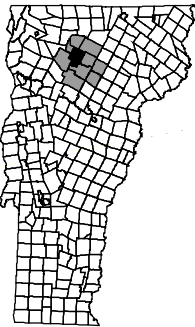
Other Features

- Town Boundary
- Village Boundary
- Lake/Pond
- Streams



DATA SOURCES:
POLITICAL BOUNDARIES: 1:24000 USGS Quadrangles, VCGI, 1991.
ROADS: 1:5000 E-911 Road Data, 2014.
SURFACE WATER: On-screen digitized from 1:5000 digital orthophotos using USGS 7 1/2' quadrangles and 1:20000 color infrared aerial photography as additional source material, VCGI for VHD-USGS, 2001.
SEPTIC SUITABILITY: Optically scanned from 1:20,000 USDA-NRCS Soil maps, VCGI, 2007.

Lamoille County Planning Commission
Demars Building, 2nd Floor
52 Portland Street, P.O. Box 1637
Morrisville, VT 05661-1009
802.888.4548 f 802.888.6938
www.lcpvt.org/ March, 2016



Traverse Mercator,
VT State Plane, NAD 1983

For planning purposes only.
Not for regulatory interpretation.